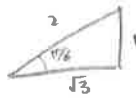


# Math 122 HW #11

Section 13.1 # 37, 40, 60, 64

#37  $\csc \frac{\pi}{6} = \frac{1}{\sin \frac{\pi}{6}} = \frac{1}{\frac{1}{2}} = 2$



$\sin \frac{\pi}{6} = \frac{1}{2}$

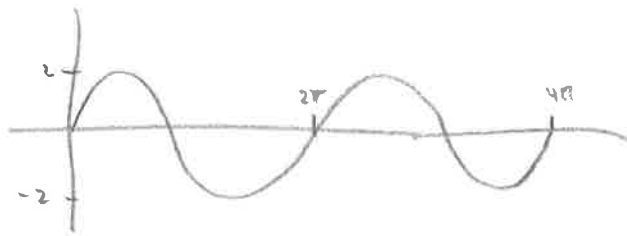
#40  $\sec \pi = \frac{1}{\cos \pi} = \frac{1}{-1} = -1$



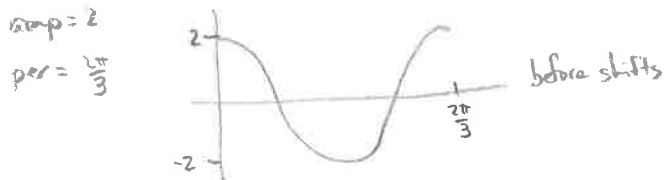
$\cos \pi = -1$

#57  $f(x) = \cos(3x)$       amp = 1  
per =  $\frac{2\pi}{3}$

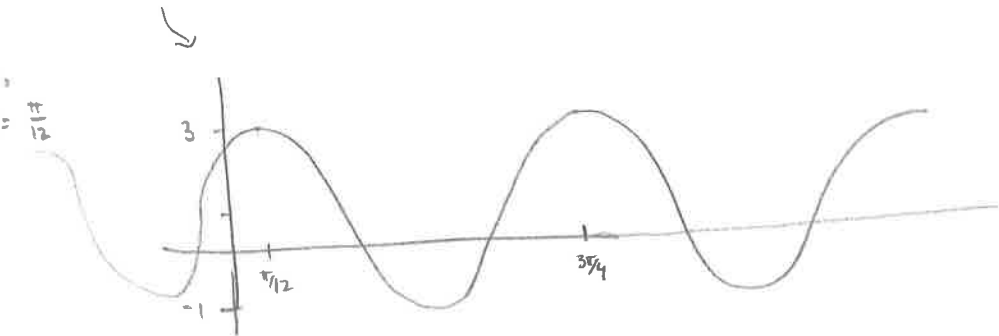
#60  $y = 2 \sin x$       amp = 2  
per =  $2\pi$



#64  $y = 2 \cos(3x - \frac{\pi}{4}) + 1$



shift up 1,  
right  $\frac{\pi/4}{3} = \frac{\pi}{12}$



$\frac{2\pi}{3} + \frac{\pi}{12} = \frac{3\pi}{4}$