

Math 1121

HW #1

Section 2.1 #38

3.1 #7

#38

Domain is $[-2, 4]$

Range is $[0, 5]$

a) $f(-2) = 5$

b) $f(0) = 0$

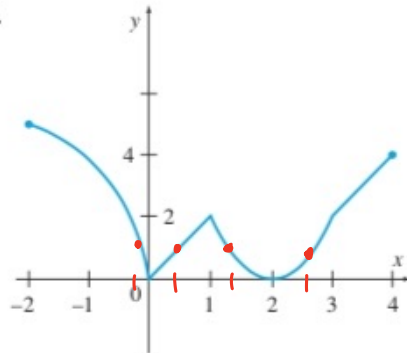
c) $f(1/2) = 1$

d) $f(x) = 1$ when

$x = -2, .5, 1.3, 2.5$

These are here

38.



7. (a) $\lim_{x \rightarrow 0} f(x)$

(b) $\lim_{x \rightarrow 2} f(x)$

#7

a) $\lim_{x \rightarrow 0} f(x) = 0$

b) $\lim_{x \rightarrow 2} f(x)$ DNE

Since the curve is split.

