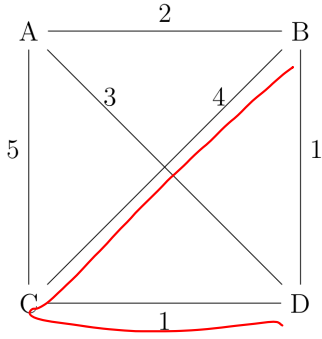


PROBLEM.



Repeated NN

A: ABDCA
 2 1 1 5 → 9

B: BDCAB
 1 1 5 2 → 9

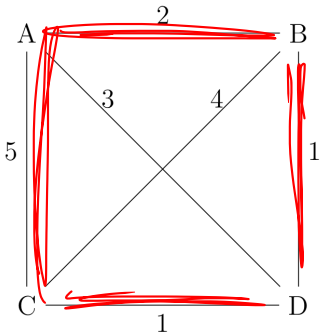
↑
 (best one
 (tied))

C: CDBAC → 9
 1 1 2 5

D: DCBAD → 10
 1 4 2 3

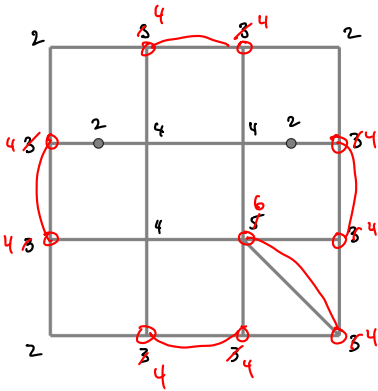
Sort edges.

PROBLEM.



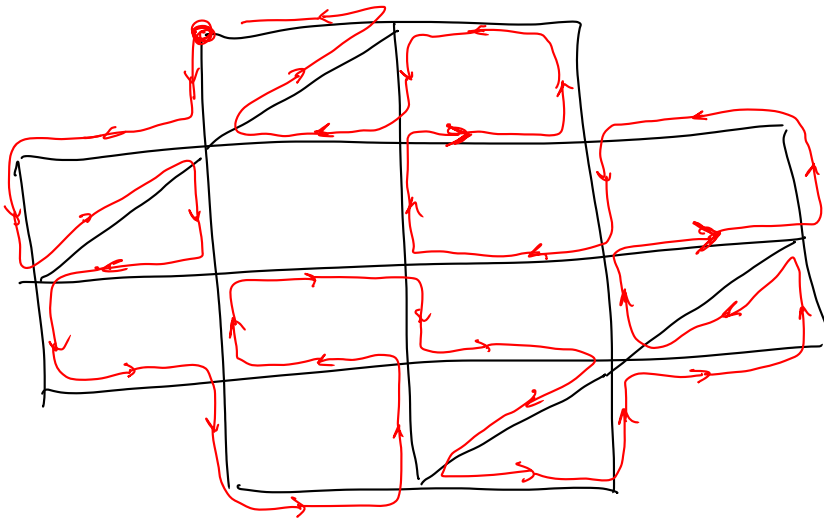
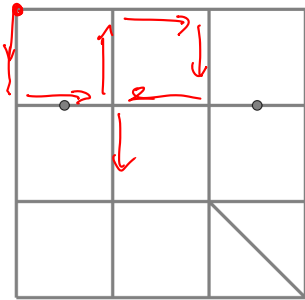
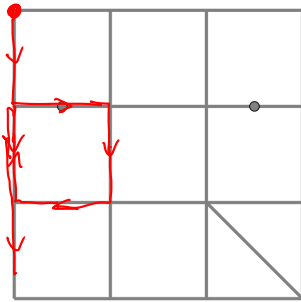
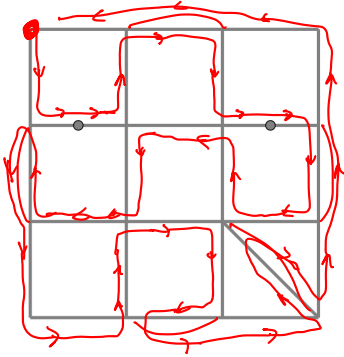
~~1, 1, 2, 3, 4, 5~~

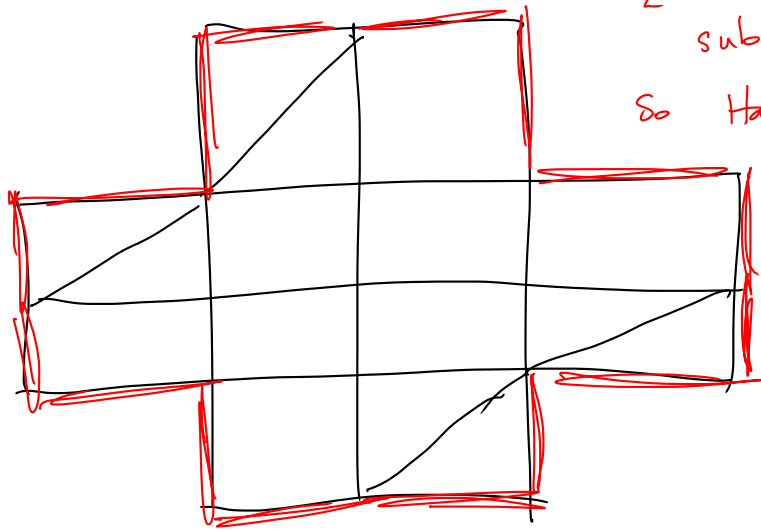
BDCAB



Min. dup circuit!

5 dupes will be
 necessary.





2's forced a
subcircuit.

So Ham is impossible.