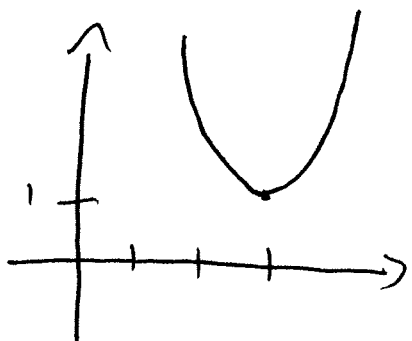


Write your name on this quiz

1. Write down the function whose graph differs from the graph of the parabola  $y = x^2$  by translating to the right by 3 units and upwards by 1 unit.
2. Sketch the graph of the function  $H(x) = 3 \sin(x/2)$ . Be sure to label the vertical and horizontal axes clearly.

①



$$F(x) = (x-3)^2 + 1$$

②

